



Extending the Range of Agilent InfiniiMax Probes

Application Note 1601

Introduction

This application note describes how to extend the operating range of Agilent InfiniiMax probes in voltage, temperature, and distance (reach) between probe amplifiers and heads.

Operating at high or low temperatures

You may need to monitor a system in a temperature chamber with an oscilloscope probe to verify performance over a wide range of operating temperature, or to determine the cause of failures at high or low temperatures. Agilent InfiniiMax probe amplifiers (1130 Series and 1160 Series) have a specified operating temperature range from 5° C to 40° C. However, the probe heads can be operated over a much wider range (see Table 1). You can use the Agilent N5450A extension cable set (Figure 1) to physically separate the probe heads from the probe amplifiers. This will allow you to operate the probe heads inside a temperature chamber with the probe amplifier located outside the temperature chamber.



Figure 1 Probe head and extension cables connected to probe amplifier

Cycling the probe heads through a wide range of temperatures in a temperature chamber will impact the life of the probe heads. Table 1 shows the expected life of a probe head, expressed in the number of cycles through the range from min to max as shown in the second column. Note: Probe heads may appear discolored after lengthy operation at high temperatures. The color or texture of the cables may also change. This does not indicate degradation of the probe head or cable performance.



As with any cable, there is some loss due to the 3-ft length of these cables. Figures 2 and 3 show the frequency and time domain responses of the 1169A 13GHz InfiniiMax probe and N5381A solder-in probe head without (red) and with (blue) the extension cables. Figures 4 and 5 show the frequency and time domain responses of the 1134A 8 GHz InfiniiMax probe and E2677A solder-in probe head without (red) and with (blue) the extension cables. The -3 db frequency does not change noticeably, but there is approximately 1 db of additional in-band loss that will affect the risetime slightly. The addition of the extension cables will also cause the equivalent input noise of the probe to increase by about 40%.

Probe heads	Operating temperature range	Lifetime in number of cycles
N5381A 12 GHz differential solder-in head	-55° C to +150° C	>250
E2677A, E2678A, N5426A, or N5451A	-25° C to +80° C	>1000

Table 1 Probe head operating temperature ranges

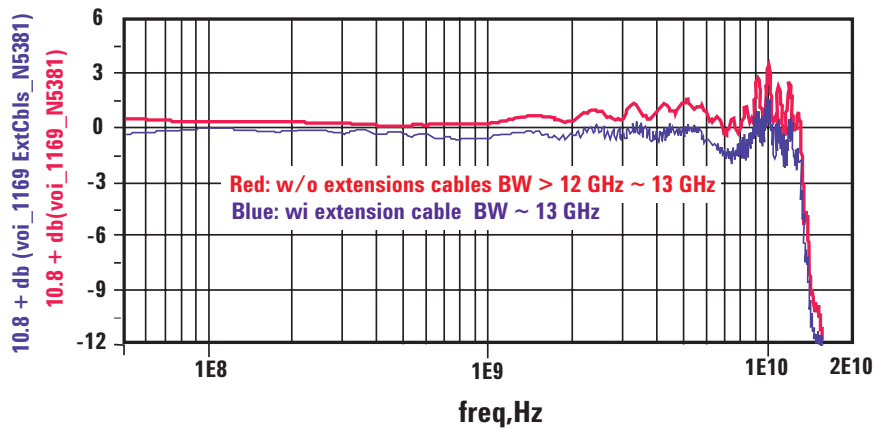


Figure 2 1169A and N5381A frequency response without (red) and with (blue) extension cables

Measurement challenges (continued)

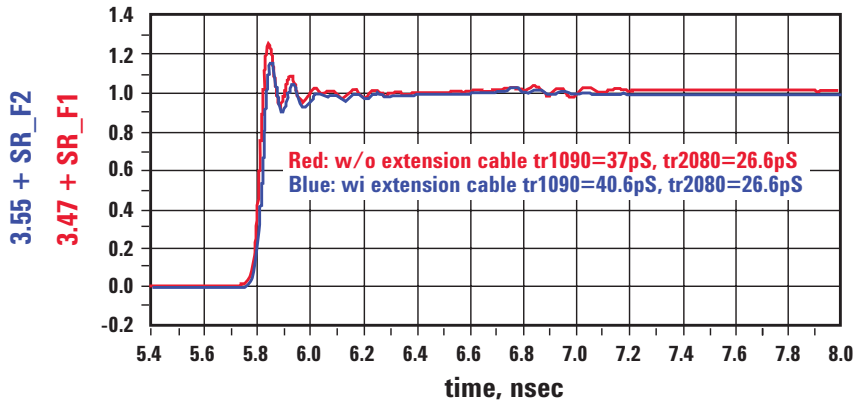


Figure 3A 1169A and N5381A Step response without (red) and with (blue) extension cables

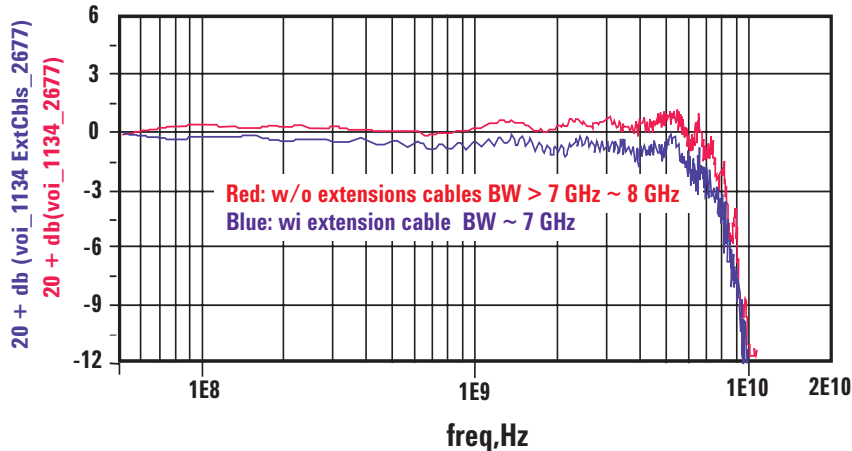


Figure 3B 1134A and E2677A Frequency response without (red) and with (blue) extension cables

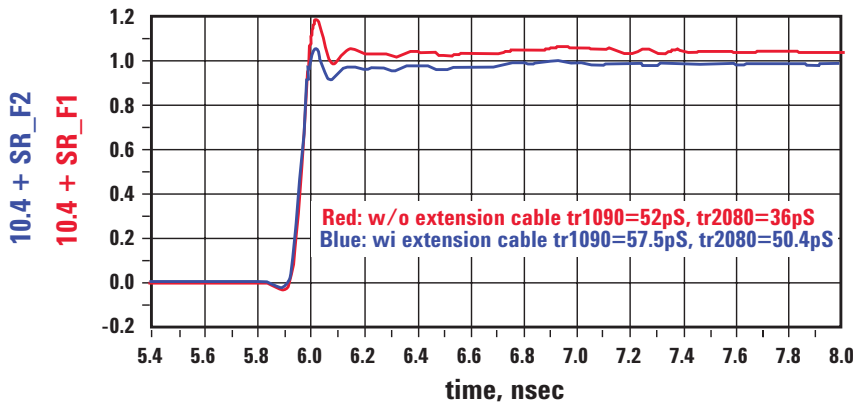


Figure 4 1134A and E2677A Step response without (red) and with (blue) extension cables

Increasing the voltage dynamic range

The dynamic range of the 1130 series is 5 V p-p; the dynamic range of the 1160 series is 3.3 V p-p. If you need to measure larger signals, the architecture of the InfiniiMax probes allows you to add coaxial RF attenuators between the probe head and the probe amplifier to increase the dynamic range. Attenuators also allow you to increase the offset range of the probe.

The bandwidth and rise time of the probe system is not affected when using high quality attenuators. There is, however, a trade-off in noise and in the accuracy of DC offset relative to the input.

The maximum input voltage of the probe heads is +/-30 Vdc, so they should not be used to measure signals that exceed this range. This places a practical limit of 20 dB on the attenuators that are inserted between the probe head and the probe amplifier. Larger attenuation ratios will only degrade the noise performance and gain of the probe system.

Table 2 shows the typical noise, dynamic range, DC attenuation, and offset range for various attenuation values when used with the two families of InfiniiMax probe amplifiers.

Probe amplifier	Added attenuator	Dynamic range	Offset range	Typical noise referred to	Nominal DC attenuation of probe system
1130 Series	None	5 V p-p	+/-12V	3 mV RMS	10:1
1130 Series	6 dB	10 V p-p	+/-24V	7.8 mV RMS	20:1
1130 Series	12 dB	20 V p-p	+/-48V*	16.7 mV RMS	40:1
1130 Series	20 dB	50 V p-p	+/-120V*	41.7 mV RMS	100:1
1160 Series	None	3.3 V p-p	+/-16V	2.2 mV RMS	3.45:1
1160 Series	6 dB	6.6 V p-p	+/-32V*	6.3 mV RMS	6.9:1
1160 Series	12 dB	13.2 V p-p	+/-64V*	13.2 mV RMS	13.8:1
1160 Series	20 dB	33.3 V p-p	+/-160V*	33.4 mV RMS	69:1

*: Usable range of DC voltage at the probe input is limited to +/-30 Vdc

Note: The figures shown above do not apply to the N5380A dual-SMA probe head. Due to the maximum input voltage specification of 2.28 VRMS of the N5380A, it is not suitable for measuring signals large enough to require an added attenuator.

Setting up the scope for the proper probe attenuation ratio

The software in the Infiniium oscilloscope will detect the probe when connected and by default will assume that no additional attenuation is installed. If you want the scale factor readings and settings on the oscilloscope to be correct with the attenuator installed, go to the Setup menu and select the channel to which the probe is connected.

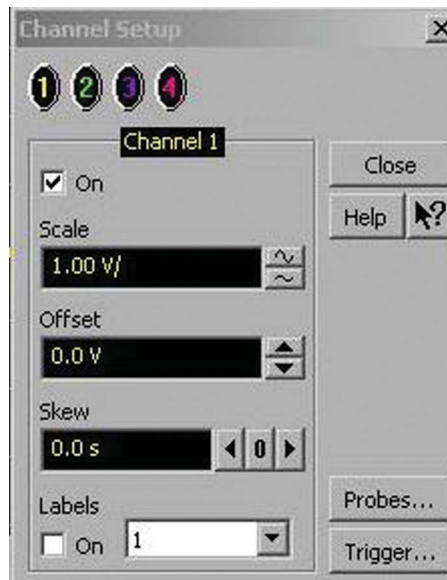


Figure 5 Channel menu

In the Channel Setup menu, click on “probes.”

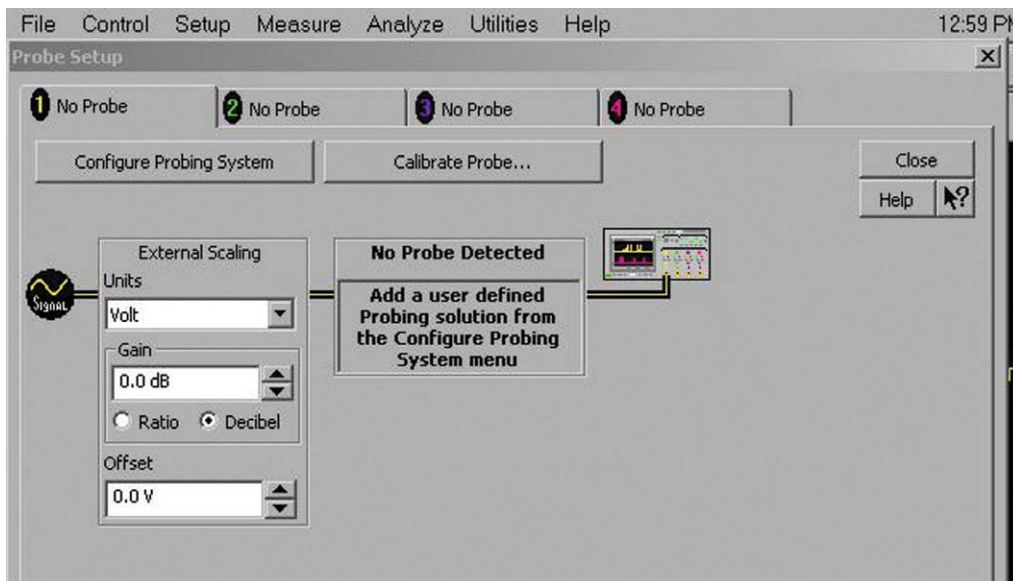


Figure 6 Probe menu

In the next screen, click on “Configure probing system.”

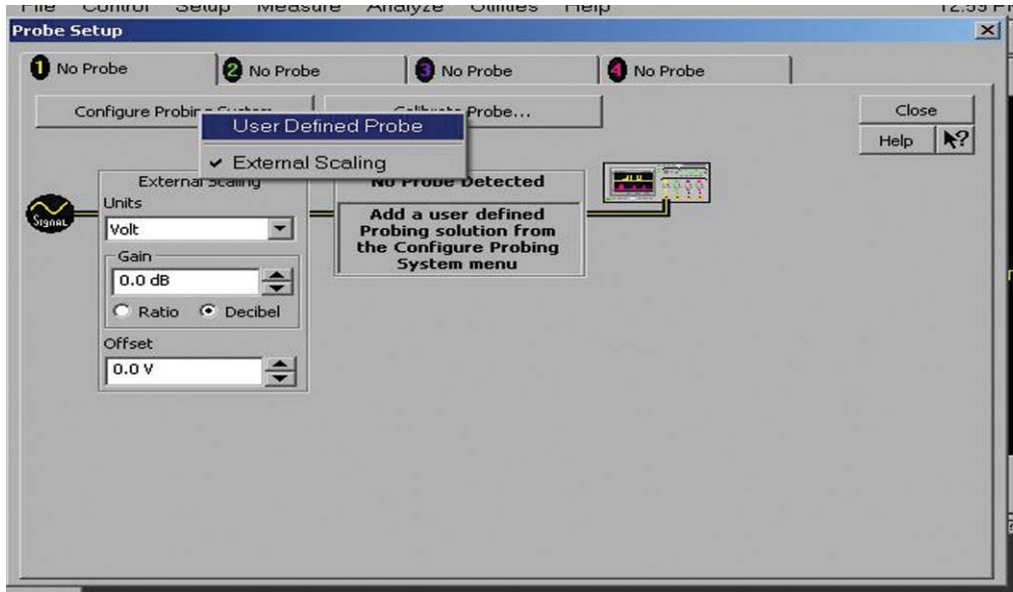


Figure 7 Probe menu

Then select “User defined probe.”

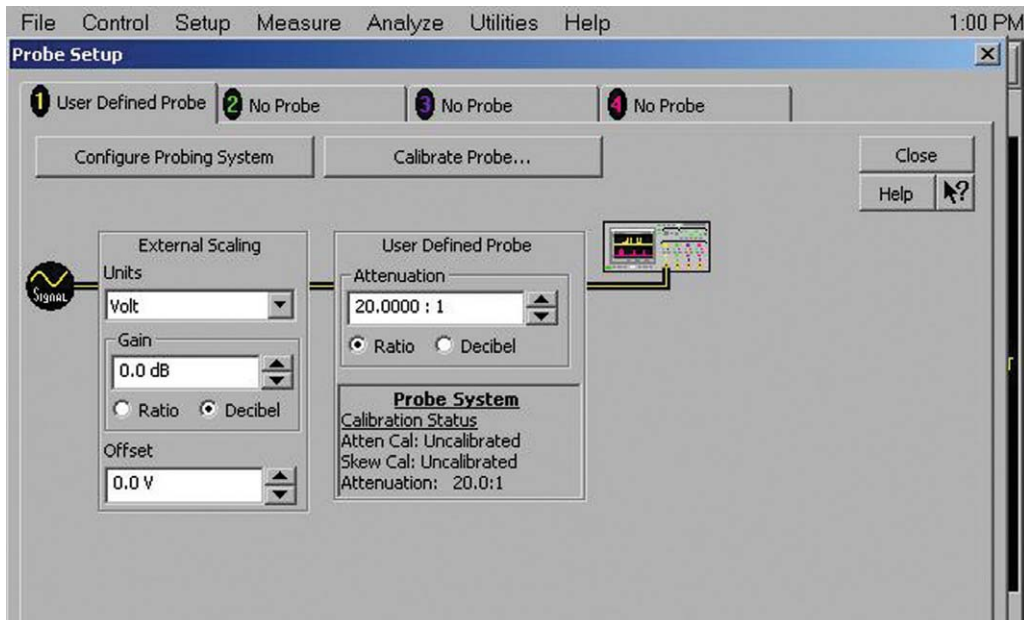


Figure 8 Probe menu

Then enter the nominal attenuation value from the table above.

Calibrating the probe system (optional)

If you wish to calibrate the probe and attenuator system for the best attainable accuracy, you can use the calibrated dc outputs from the oscilloscope's Aux Out. Go to the Utilities menu and select "Calibration." Select "dc" from the dropdown menu under "Aux."

With no input to the probe, measure the average voltage using the "Vavg" automatic measurement. Then probe a known dc output voltage from the Aux Out, using the Probe Cal Fixture E2655B. Measure the average voltage again using the "Vavg" automatic measurement. Calculate the correct attenuation ratio of the probing system based on the ratio of the difference between the two readings to the known output from the calibrator. Enter this correct attenuation value into the user-defined probe menu (see Figure 8).

How to purchase attenuators

GPO attenuators are available from Aeroflex/Inmet. The Web page for the desired attenuators is <http://www.aeroflex-inmet.com/PDFILES/18G-ATT.pdf>.

Be sure to specify the 18GL series, not the 18G series. The 18G series have a very strong detent mechanism and are not intended to be unmated. The 18GL series have a lower retention force and can be unmated without damaging the probe head.

The Aeroflex/Inmet part number is 18GL-XX, where XX is the desired attenuation in dB. For example, a 20 dB attenuator would be part number 18GL-20.

The design of these attenuators prevents them from fully engaging the connector inside the probe amplifier body. For this reason it is important to also use a GPO male to GPO female adapter between the attenuator and the probe amplifier. See Figure 8. A suitable adapter is available from Tensolite, part number P914-2CC.

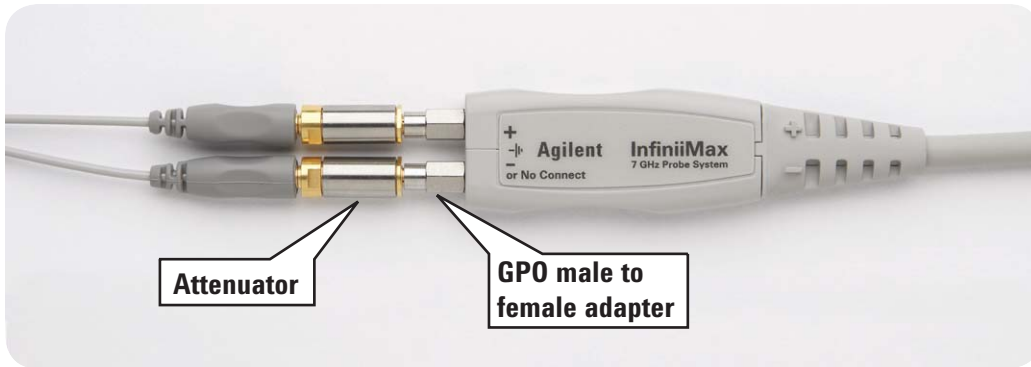


Figure 9 Assembling attenuators and adapter

Increasing the separation between the probe amplifier and the probe head

In some cases, it may be desirable to increase the distance between the probe amplifier and the probe head. For example, in a densely packed system with large plug-in cards, there may not be enough space between cards for the probe amplifier and the probe head leads may not be long enough to reach the probing points. The probe head extension cables N5450A can be useful in this situation.



Agilent Email Updates

www.agilent.com/find/emailupdates

Get the latest information on the products and applications you select.



Agilent Direct

www.agilent.com/find/agilentdirect

Quickly choose and use your test equipment solutions with confidence.



www.agilent.com/find/open

Agilent Open simplifies the process of connecting and programming test systems to help engineers design, validate and manufacture electronic products. Agilent offers open connectivity for a broad range of system-ready instruments, open industry software, PC-standard I/O and global support, which are combined to more easily integrate test system development.



www.lxistandard.org

LXI is the LAN-based successor to GPIB, providing faster, more efficient connectivity. Agilent is a founding member of the LXI consortium.

Remove all doubt

Our repair and calibration services will get your equipment back to you, performing like new, when promised. You will get full value out of your Agilent equipment throughout its lifetime. Your equipment will be serviced by Agilent-trained technicians using the latest factory calibration procedures, automated repair diagnostics and genuine parts. You will always have the utmost confidence in your measurements.

Agilent offers a wide range of additional expert test and measurement services for your equipment, including initial start-up assistance onsite education and training, as well as design, system integration, and project management.

For more information on repair and calibration services, go to

www.agilent.com/find/removealldoubt

www.agilent.com

For more information on Agilent Technologies' products, applications or services, please contact your local Agilent office. The complete list is available at:

www.agilent.com/find/contactus

Phone

Americas

Canada	(877) 894-4414
Latin America	305 269 7500
United States	(800) 829-4444

Asia Pacific

Australia	1 800 629 485
China	800 810 0189
Hong Kong	800 938 693
India	1 800 112 929
Japan	81 426 56 7832
Korea	080 769 0800
Malaysia	1 800 888 848
Singapore	1 800 375 8100
Taiwan	0800 047 866
Thailand	1 800 226 008

Europe

Austria	0820 87 44 11
Belgium	32 (0) 2 404 93 40
Denmark	45 70 13 15 15
Finland	358 (0) 10 855 2100
France	0825 010 700
Germany	01805 24 6333* *0.14€/minute
Ireland	1890 924 204
Italy	39 02 92 60 8484
Netherlands	31 (0) 20 547 2111
Spain	34 (91) 631 3300
Sweden	0200-88 22 55
Switzerland	(French) 44 (21) 8113811 (Opt 2)
Switzerland	(German) 0800 80 53 53 (Opt 1)
United Kingdom	44 (0) 7004 666666

Other European countries:
www.agilent.com/find/contactus

Revised: March 23, 2007

Product specifications and descriptions in this document subject to change without notice.

© Agilent Technologies, Inc. 2007
Printed in USA, November 2, 2007
5989-7587EN



Agilent Technologies